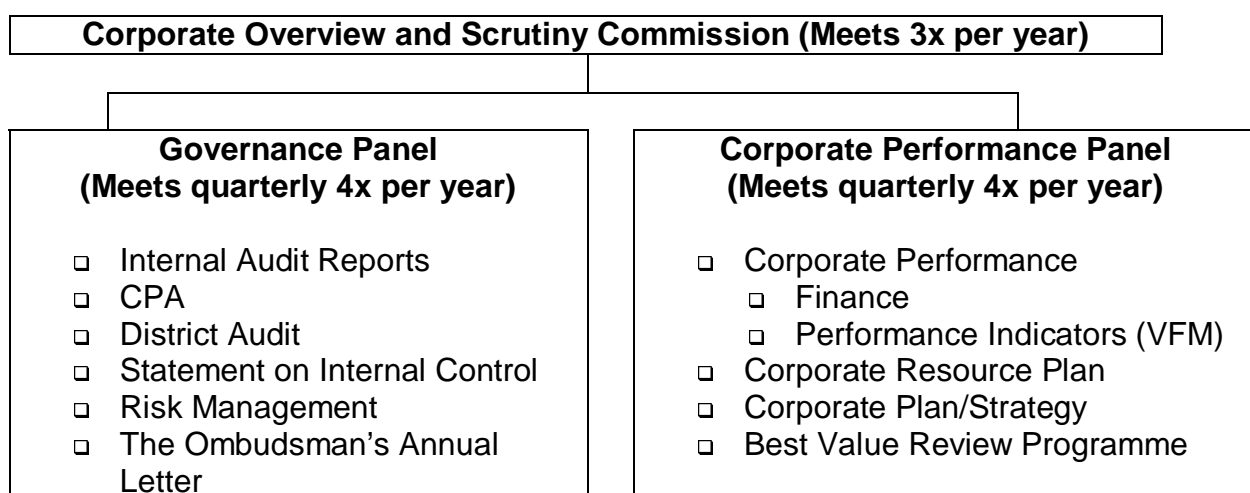


## APPENDIX A

### Overview and Scrutiny Development

#### Existing Council Resources Overview and Scrutiny Commission

##### Option 1a



- The existing Council Resources Overview and Scrutiny Commission would have the remit to consider Governance and Corporate Performance via 2 Panels of Members drawn from the Commission and substitutes
  - The 2 Panels would develop expertise in Governance and Performance related issues with appropriate training
  - The other 2 Commissions would be reviewed to accommodate the services/departments within the remit of the existing Council Resources Overview and Scrutiny Commission (See later).
  - The first meeting would set the programme for the 2 Panels. The Commission would then meet at the end of the Budget Scrutiny process to coordinate the other 2 Commissions responses and respond on behalf of Scrutiny. The final meeting would be to review the work of the 2 Panels
- The Commission would have the specific remit within the Budget process and for other Corporate issues to coordinate the other 2 Commissions responses and respond on behalf of Scrutiny

<b>Advantages</b>	<b>Disadvantages</b>
❑ Smaller groups of experienced Members	❑ Availability of interested members to

<ul style="list-style-type: none"> <li>❑ More focused training</li> <li>❑ More focused work programmes</li> <li>❑ Clearly defined reporting mechanisms</li> <li>❑ Planned timetable to meet statutory and other deadlines</li> <li>❑ More responsive working arrangements</li> <li>❑ Splitting the more formal issues from the main Commission for more interested Members</li> <li>❑ Formation of a Commission focused on Corporate issues with no review/service responsibilities</li> </ul>	<p>serve on the Panels</p> <ul style="list-style-type: none"> <li>❑ Formation of a Commission focused on Corporate issues with no review/service responsibilities</li> </ul>
--	--

**Existing Environment and Community Services Overview and Scrutiny Commissions**  
**Review of Remits**

**Community and Partners Overview and Scrutiny Commission (External Focus)**

- ❑ Service Provision (Previous Environment and Community Services O&S remits)
- ❑ Local Strategic Partnership
- ❑ Partnerships
- ❑ External Scrutiny (Including Health)



**Examples of work would include:**

- ❑ Work of the Traffic Panel
- ❑ Work regarding GM Food
- ❑ Royal Hall work

**Organisation Improvement Overview and Scrutiny Commission (Internal Focus)**

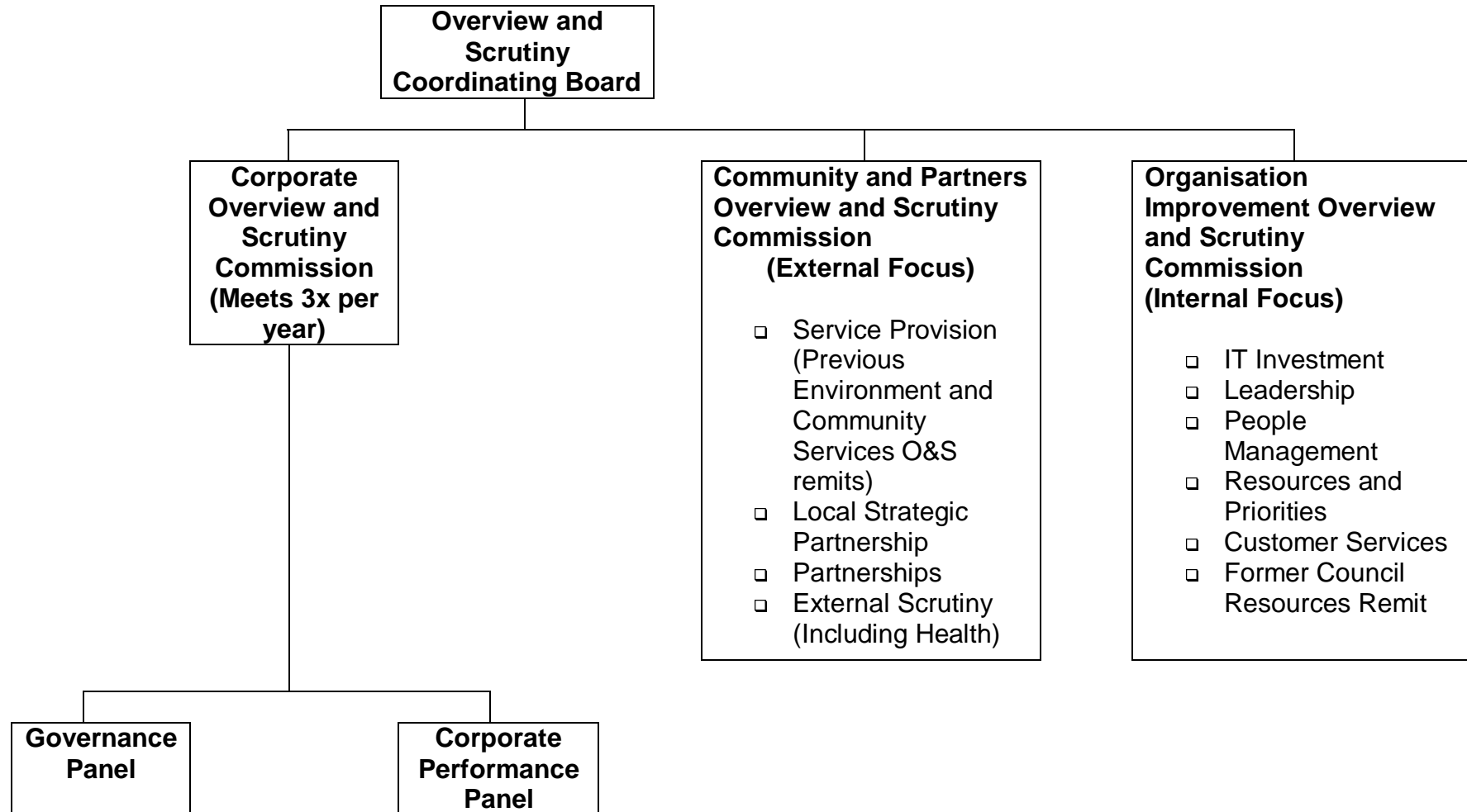
- ❑ IT Investment
- ❑ Leadership
- ❑ People Management
- ❑ Resources and Priorities
- ❑ Customer Services
- ❑ Former Council Resources Remit



**Examples of work would include:**

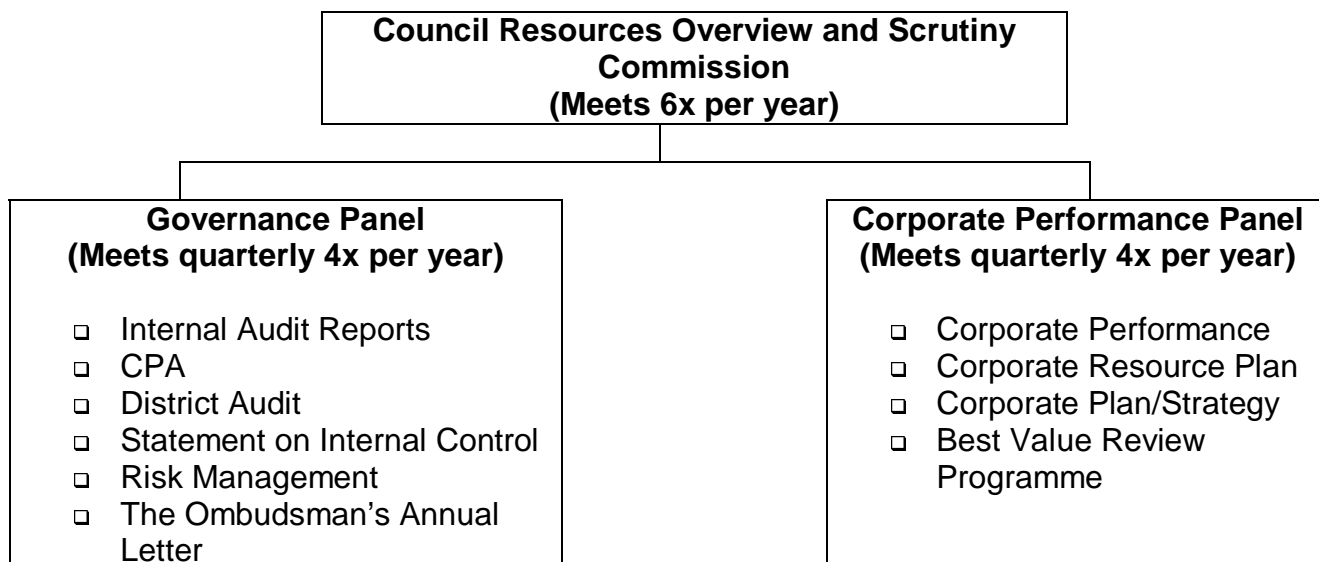
- ❑ HIC Breakout Space
- ❑ Recruitment and Retention

**Proposed Overview and Scrutiny Structure Option 1a**



APPENDIX B

Option 1b



- This is the same structure as Option 1a but the Commission retains the services/departments within the remit of the existing Council Resources Overview and Scrutiny Commission.
- The first and last meetings of the Commission would be to set and review the work of the Panels
- The Commission would have the specific remit within the Budget process and for other Corporate issues to coordinate the other 2 Commissions responses and respond on behalf of Scrutiny

<b>Advantages</b>	<b>Disadvantages</b>
<ul style="list-style-type: none"> <li>□ Same as Option 1a</li> <li>□ The Commission retains review/service responsibilities</li> </ul>	<ul style="list-style-type: none"> <li>□ Additional Resource implications (Member Services and Scrutiny Officer)</li> <li>□ Reduction in available uncommitted Scrutiny Officer time</li> <li>□ Availability of interested members to serve on the Panels</li> <li>□ The Commission retains review/service responsibilities</li> </ul>

